



sidra



SBT KURUMSAL GİRİŞİM A.Ş.

Address: Turanköy Mh. Terkeşli Cad. No: 6 Kestel

Bursa / TÜRKİYE

Tel/Fax: 0224 272 8676 / 7000 E Mail: bilgi@sbtkurumsal.com

www.sidrakimya.com - info@sidrakimya.com

01 SODIUM MOLYBDATE
DIHYDRATE

02 ZINC SULPHATE
HEPTAHYDRATE

03 ZINC SULPHATE
HEXAHYDRATE

04 ZINC SULPHATE
MONOHYDRATE

05 IRON SULPHATE
HEPTAHYDRATE

06 IRON SULPHATE
MONOHYDRATE

07 MAGNESIUM
SULPHATE ANHYDRIDE



sidra

08 MAGNESIUM SULPHATE
DIHYDRATE

09 MAGNESIUM SULPHATE
HEPTAHYDRATE

10 MAGNESIUM SULPHATE
MONOHYDRATE

11 MAGNESIUM SULPHATE
TRIHYDRATE

12 MANGANESE SULPHATE
MONOHYDRATE

13 METALLIC ZINC
POWDER

14 COPPER SULPHATE
PENTAHYDRATE



SODIUM MOLYBDATE DIHYDRATE



Name : Sodium Molybdate Dihydrate

Formula : $\text{Na}_2\text{Mo}_4 \cdot 2\text{H}_2\text{O}$

Usage Areas :

- Corrosion inhibitor for open and closed water cooling systems,
- Engine coolants,
- Metalworking fluids,
- Metal finishing and oil drilling muds.
- It is also used as a micronutrient in pigments and animal feeds and in agriculture

Appearance : Solid, White, Crystal

Packing Type : 100 gr, 250 gr, 1 kg, 25 kg



TESTS	LIMITS
Molibden (Mo)	39,5 % min
Chloride (Cl)	50 ppm max
IronTriOxide (Fe ₂ O ₃)	100 ppm max
Arsenic (As)	50 ppm max

ZINC SULPHATE HEXAHYDRATE



Name : Zinc Sulphate Hexahydrate

Formula : $ZnSO_4 \cdot 6H_2O$

Usage Areas :

- In the Agricultural Industry; It increases the water holding capacity and product productivity of the plant by regulating the soil pH. It prevents the yellowing of the leaves, premature shedding and shrinkage.
- In the Chemical Industry
- Pharmaceutical Industry; used as an astringent (blood stopper),
- Food Industry, yeast sector,
- Synthetic Fiber Industry, Brewing industry
- Termites cause decay in wooden materials. It is used as a preservative to inhibit termites in some wood materials for the protection of wood. In this area, impregnation with chromated zinc sulfate gave very good results in wood protection.
- It is used in the bleaching process of wood pulp by being modified with thiourea dioxide. A stronger bleaching agent is formed when modified with Thiourea dioxide. In addition, the increase in the pH level increases the bleaching effect here.

Appearance : Solid, White, Crystalline Powder

Packing Type : 100 gr, 250 gr, 1 kg, 25 kg, 1000 kg

TESTS	LIMITS
Water Soluble Zinc (Zn)	23,6 ($\pm 0,4$) %
Lead (Pb)	25 ppm max
Arsenic (As)	5 ppm max
pH (in 5 % Solution)	4-5



ZINC SULPHATE HEPTAHYDRATE

Name : Zinc Sulphate Heptahydrate

Formula : $ZnSO_4 \cdot 7H_2O$

Usage Areas :

- In the Chemical Industry
- Pharmaceutical Industry; used as an astringent (blood stopper),
- In the Mining Sector; flotation of some metal ores, ore extraction,
- It is also used as an important component of precipitation baths in the production of viscose rayon and in zinc coating electrolyte, as a mordant in dyeing, as a preservative for textile leather.
- Synthetic Fiber Industry, Brewing industry.
- It is used as a wood preservative and in the manufacture of protective materials.
- It is used in the bleaching process of wood pulp by being modified with thiourea dioxide. A stronger bleaching agent is formed when modified with Thiourea dioxide. In addition, the increase in the pH level increases the bleaching effect here
- It is used as a feed additive with the identification number 3b604 according to the European Union 2016 / 1095 Commission Implementation Regulation.

Appearance : Solid, White, Crystalline Powder

Packing Type : 100 gr, 250 gr, 1 kg, 25 kg, 1000 kg



TESTS	LIMITS
Zinc (Zn)	22 ($\pm 0,4$) %
Lead (Pb)	25 ppm max
Arsenic (As)	1 ppm max
pH (in 5 % Solution)	4-6

ZINC SULPHATE MONOHYDRATE



Name : Zinc Sulphate Monohydrate

Formula : $ZnSO_4 \cdot H_2O$

Usage Areas :

- In the Agricultural Industry; It increases the water holding capacity and product productivity of the plant by regulating the soil pH. It prevents the yellowing of the leaves, premature shedding and shrinkage. It increases the number of shoots and fruit set in fruit trees, prevents fruit deformations, and increases the market value of the product. It prevents yellowing of grass in meadows and pastures, encourages rapid growth and abundant grass formation.
- Pharmaceutical Industry; used as an astringent (blood stopper),
- In the Mining Sector; flotation of some metal ores, ore extraction,
- It is also used as an important component of precipitation baths in the production of viscose rayon and in zinc coating electrolyte, as a mordant in dyeing, as a preservative for textile leather. Rayon is used in fiber production, varnishes, adhesives, titanium dioxide production, rubber as an accelerator, electroplating and surface treatment.
- It is used as a feed additive with the identification number 3b605 according to the European Union 2016 / 1095 Commission Implementation Regulation.

Appearance : Solid, White Powder

Packing Type : 100 gr, 250 gr, 1 kg, 25 kg, 1000 kg

TESTS	LIMITS
Zinc (Zn)	35 (± 1) %
Lead (Pb)	50 ppm max
Arsenic (As)	1 ppm max
Solubility In Water	99,5 % min



IRON SULPHATE HEPTAHYDRATE



Name : Iron Sulphate Heptahydrate

Formula : $\text{FeSO}_4 \cdot 7\text{H}_2\text{O}$

Usage Areas :

- Iron is an essential heavy metal that is useful in many over-the-counter vitamin and mineral supplements. It is also used therapeutically in higher doses to treat or prevent iron deficiency anemia.
- It is useful in refining gold from auric chloride solutions (gold dissolved in solution with aqua regia) to precipitate metallic gold.
- It is used to treat water by flocculation and remove phosphates in municipal and industrial wastewater treatment plants to prevent eutrophication of water bodies.
- Green vitriol is also a useful reagent for the detection of fungi.
- It is useful as an iron catalyst element of Fenton's reagent.
- Iron is one of the most essential components of saffron ink.
- It is used as a feed additive with the identification number 3b104 according to the European Union 2017 / 2330 Commission Implementation Regulation.

Appearance : Solid, Blue-Green, Crystal

Packing Type : 100 gr, 250 gr, 1 kg, 25 kg, 1000 kg



TESTS	LIMITS
Iron (Fe)	19 ($\pm 0,4$) %
Iron Sulphate (FeSO_4)	52 (± 1) %
Arsenic (As)	1 ppm max
Free Moisture	1 % max

IRON SULPHATE MONOHYDRATE



Name : Iron Sulphate Monohydrate

Formula : $\text{FeSO}_4 \cdot \text{H}_2\text{O}$

Usage Areas :

- It is added in cement production in order to provide both a cost advantage and a good strength to the cement. In this way, high strength is provided with low cost.
- Organic acids in fruits and vegetables cause discoloration. Ferrous sulfate-based fertilizers are used to prevent discoloration.
- It is used in the production of some chemicals in the chemical industry. These are; Chemicals such as sulfur dioxide and sulfuric acid.
- Ferrous Sulphate Anhydrate is used in products produced to be used as an iron additive in non-medicine nutritional supplements.
- If there is a high amount of Chromium in the cement, $\text{FeSO}_4 \cdot 7\text{H}_2\text{O}$ is used to reduce this chromium. It has higher reducing ability than Sodium Metabisulfite.
- It is used as a feed additive with the identification number 3b103 according to the European Union 2017 / 2330 Commission Implementation Regulation.

Appearance : Solid, Grey-Green, Powder

Packing Type : 100 gr, 250 gr, 1 kg, 25 kg, 1000 kg

TESTS	LIMITS
Iron (Fe)	31 ($\pm 0,4$) %
Iron Sulphate (FeSO_4)	52 (± 1) %
Lead (Pb)	50 ppm max
Arsenic (As)	1 ppm max



MAGNESIUM SULPHATE ANHYDRIDE



Name : Magnesium Sulphate Anhydride

Formula : $MgSO_4$

Usage Areas :

- Magnesium sulfate anhydrous and epsom salt are used as cost-effective manufacturing accessories in the production of thermoplastics such as ABS plastics (acrylonitrile butadiene styrene) used around the world. Its biggest advantage is its lower corrosion level compared to other salts.
- Anhydrous magnesium sulfate is required in the processing of refractory materials. It is used to stabilize the green part during the drying and sintering process.
- Magnesium sulfate anhydrous is used in chemical laboratories as a mild desiccant for organic solvents.
- Magnesium sulfate anhydrous and epsom salt are required for spin baths carried out in the process of making rayon fibers
- It is used as a feed ingredient with the identification number 11.2.4 according to the European Union 2017 / 1017 Commission Implementation Regulation.

Appearance : Solid, White Powder

Packing Type : 100 gr, 250 gr, 1 kg, 25 kg, 1000 kg



TESTS	LIMITS
Magnesium (Mg)	19,6 % min
Water Soluble (MgO)	32,5 % min
Heavy Metals (Pb, As, Hg)	0,0025 % max
pH (in 10% Solution)	3-5

MAGNESIUM SULPHATE DIHYDRATE



Name : Magnesium Sulphate Dihydrate

Formula : $MgSO_4 \cdot 2H_2O$

Usage Areas :

- Feed Industry,
- Food Industry, fermentation (yeast)
- Agriculture Industry,
- It is very widely used in Technical Industries.
- Soap

Appearance : Solid, White Powder

Packing Type : 100 gr, 250 gr, 1 kg, 25 kg, 1000 kg



TESTS	LIMITS
Purity	97 % min
Magnesium (Mg)	15 % min-15,5 % max
Heavy Metals (Pb, As, Hg)	0,0025 % max
pH (in 10% Solution)	4-7



MAGNESIUM SULPHATE HEPTAHYDRATE



Name : Magnesium Sulphate Heptahydrate

Formula : $MgSO_4 \cdot 7H_2O$

Usage Areas :

- Magnesium sulfate can be used internally and externally. The main external use is the formulation of bath salts to soothe aching feet, especially for foot baths.
- Magnesium sulfate anhydrous and epsom salt are used as cost-effective manufacturing accessories in the production of thermoplastics such as ABS plastics (acrylonitrile butadiene styrene) used around the world. Its biggest advantage is its lower corrosion level compared to other salts.
- Anhydrous magnesium sulfate is widely used as a desiccant in organic synthesis because of its affinity for water and its compatibility with most organic compounds.
- Magnesium (or sodium) sulfate is also used to test aggregates for strength against the ASTM C88 standard when the material has no service record under actual weather conditions.
- It is used as a feed ingredient with the identification number 11.2.2 according to the European Union 2017 / 1017 Commission Implementation Regulation.

Appearance : Solid, White Crystal

Packing Type : 100 gr, 250 gr, 1 kg, 25 kg, 1000 kg



TESTS	LIMITS
Water Soluble (MgO)	15,8 % min-16,2 % max
Magnesium (Mg)	9,5 % min- 9,8 % max
Heavy Metals (Pb, As, Hg)	0,0025 % max
pH (in 5 % Solution)	4-7

MAGNESIUM SULPHATE MONOHYDRATE



Name : Magnesium Sulphate Monohydrate

Formula : $MgSO_4 \cdot H_2O$

Usage Areas :

- Soap and Detergent Industry,
- Cosmetics Industry,
- Food Industry; The acid coupling is used as a solidification medium.
- In iron and steel factories,
- Textile Industry; Weighting is a finishing made to make the fabric heavier. Chemical sulphate is used as a weighting agent. It is one of the inorganic substances used in leather processing.
- Feed Industry; in animal health and nutrition.
- Agricultural Industry; Inclusion is a fertilizer used for modern operators in all kinds of greenhouses, soilless agriculture and open field, for the purposes of "Magnesium (Mg) and Sulfur (S) feeding and for the elimination of their deficiencies.

Appearance : Solid, White Powder

Packing Type : 100 gr, 250 gr, 1 kg, 25 kg, 1000 kg



TESTS	LIMITS
Purity	97 % min
Water Soluble (MgO)	27,4 % min-28,5 % max
Magnesium (Mg)	16,5 % min-17,2 % max
pH (in 10% Solution)	3-5



MAGNESIUM SULPHATE TRIHYDRATE

Name : Magnesium Sulphate Trihydrate

Formula : $MgSO_4 \cdot 3H_2O$

Usage Areas :

- Food Industry, fermentation (yeast)
- Agriculture Industry,
- It is very widely used in Technical Industries.
- Soap

Appearance : Solid, White Powder

Packing Type : 100 gr, 250 gr, 1 kg, 25 kg, 1000 kg



TESTS	LIMITS
Magnesium (Mg)	13,5 % min- 13,9 % max
Purity	97 % min
Heavy Metals (Pb, As, Hg)	0,0025 % max
pH (in 5 % Solution)	4-7

MANGANESE SULPHATE MONOHYDRATE



Name : Manganese Sulphate Monohydrate

Formula : $MnSO_4 \cdot H_2O$

Usage Areas :

- Manganese sulphate is used in fertilizer ingredients used to eliminate manganese deficiency in calcareous soils and alkaline soils.
- It is used in the purification of drinking water.
- Manganese sulfate is used in steelmaking to increase its durability.
- Manganese sulfate is used to prevent corrosion of alloys containing manganese and aluminum.
- Manganese sulfate is a byproduct of various industrially important oxidations used in manganese dioxide, including the production of hydroquinone and anisaldehyde.
- Porcelain, glaze, ceramic,
- In mineral ore flotation,
- It is used as a feed additive with the identification number 3b503 according to the European Union 2017 / 1490 Commission Implementation Regulation.

Appearance : Solid, Pale Pink, Powder

Packing Type : 100 gr, 250 gr, 1 kg, 25 kg, 1000 kg



TESTS	LIMITS
Manganese (Mn)	31,8 ($\pm 0,4$) %
Lead (Pb)	50 ppm max
Arsenic (As)	1 ppm max
Solubility In Water	99,5 %



METALLIC ZINC POWDER



Name : Metallic Zinc Powder

Formula : Zn

Usage Areas :

- Zinc powder thermal spraying is a process in which they melt it. Spray Zinc Powder and then onto desired metal surface. It ensures that the products are resistant to corrosion. Zinc Powder improves the quality of products. It enables them to sustain a challenging environment that saves money and resources.
- Metallic zinc dust is used in paints to prevent rust and corrosion of components. Zinc paints block stains, reduce corrosion and also provide mildew resistance.
- In pharmacology (in the pharmaceutical industry),
- In Fireworks (as the substance that gives the bright glow),
- In the Diamond Cutter industry,
- Friction parts, brake pads.

Appearance :

Packing Type :

TESTS	LIMITS
Total Zinc (Zn)	99 % min
Particle Size -32 Micron	98-100 %
Particle Size +32 Micron	2 % max

COPPER SULPHATE PENTAHYDRATE



Name : Copper Sulphate Pentahydrate

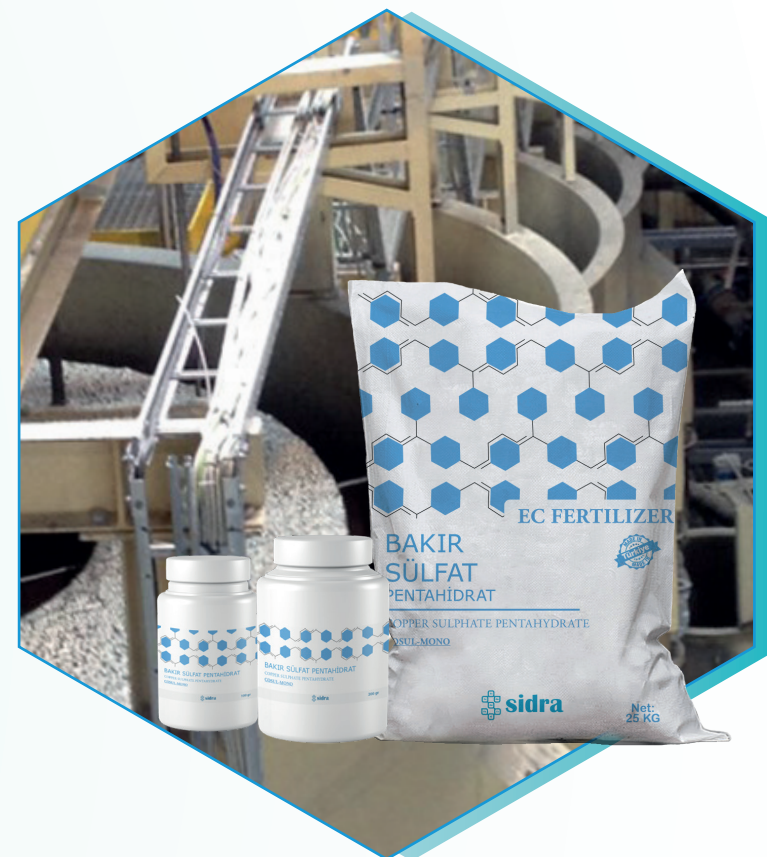
Formula : $\text{CuSO}_4 \cdot 5\text{H}_2\text{O}$

Usage Areas :

- It is used in the agricultural sector to eliminate copper deficiency in the soil. Also in animals it can be used to eliminate copper deficiency.
- As a growth stimulant chemical in poultry production, as a nutrient.
- This active ingredient can be used in the manufacture of chemicals used as fungicides.
- Slugs and snails that harm plants need to be destroyed. Therefore, pesticides containing copper ore should be produced and removed.
- Copper sulfate is used so that tomatoes can give more products and seedlings can make new sprouts. With its use in this area, the soil is sterilized. It is applied in the form of a mixture with ammonium carbonate.
- It shows very good inhibitory agent properties to control scum in ponds where farmed fish are raised.
- To ensure the destruction of algal blooms in ponds for human health.

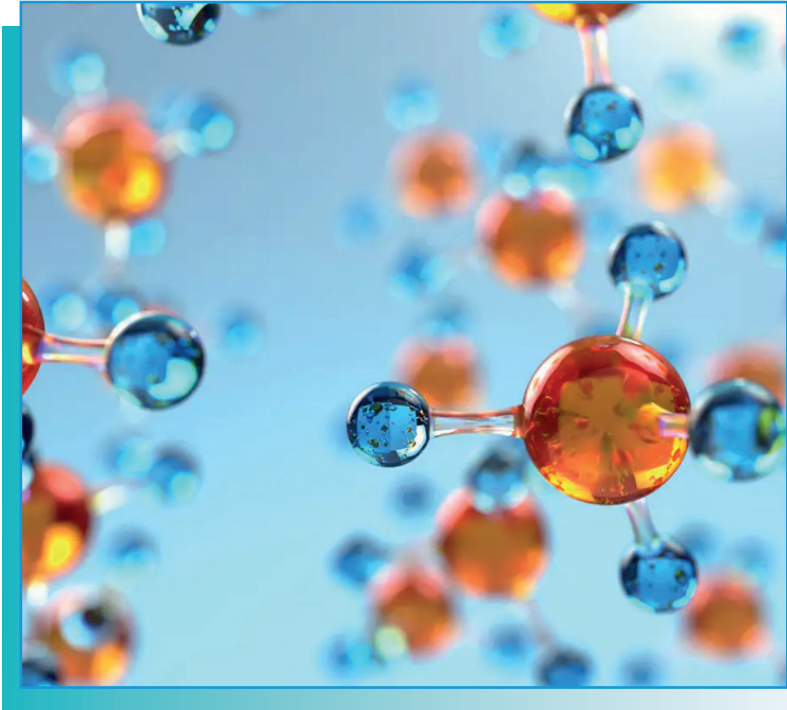
Appearance : Solid, Blue, Crystal

Packing Type : 100 gr, 250 gr, 1 kg, 25 kg, 1000 kg



TESTS	LIMITS
Copper (Cu)	25 ($\pm 0,4$) %
Lead (Pb)	50 ppm max
Arsenic (As)	50 ppm max
Solubility In Water	99,5 %





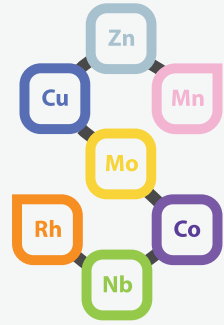
Sidra Kimya is an SBT brand.

Sidra contributes to the country's economy by producing the products it produces in accordance with its name. We help reduce carbon emissions by producing certain products in our portfolio with the recycling process.

With our competent and idealistic R&D team, we continue our work with the same enthusiasm as the first day in order to achieve the goal of reducing dependence on imports, which is the goal of our company and brand.

Sidra Kimya is a reliable name in the chemical industry with its many years of experience. We manufacture by adhering to quality standards and aim to exceed the expectations of our customers. Our professional team provides high quality products using the latest technologies.





sidra

SBT KURUMSAL GİRİŞİM A.Ş.

Address: Turanköy Mh. Terkeşli Cad. No: 6 Kestel / Bursa / TÜRKİYE

Tel/Fax: 0224 272 8676 / 7000
www.sidrakimya.com

E Mail: bilgi@sbtkurumsal.com
info@sidrakimya.com